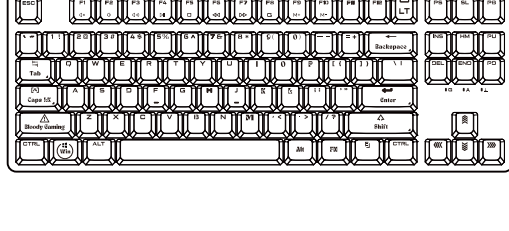
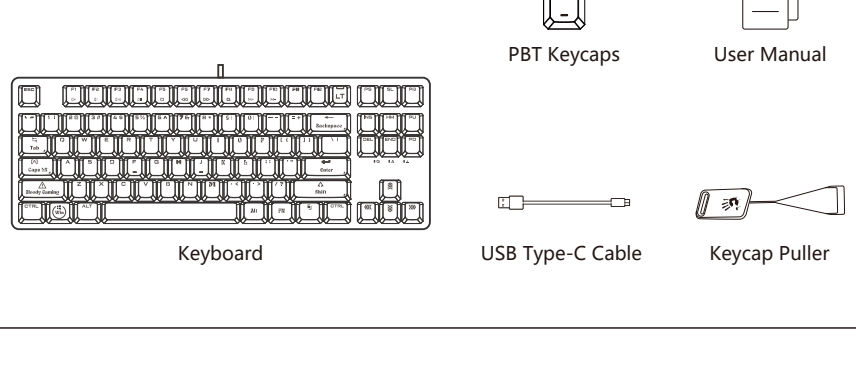


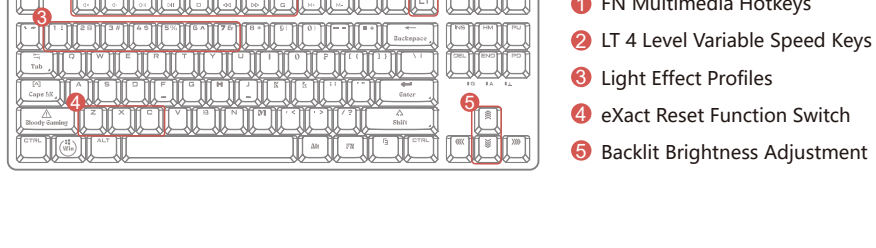
QUICK START GUIDE



WHAT'S IN THE BOX

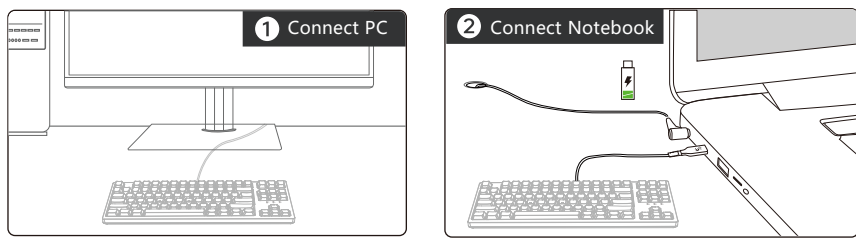


KNOW YOUR PRODUCT



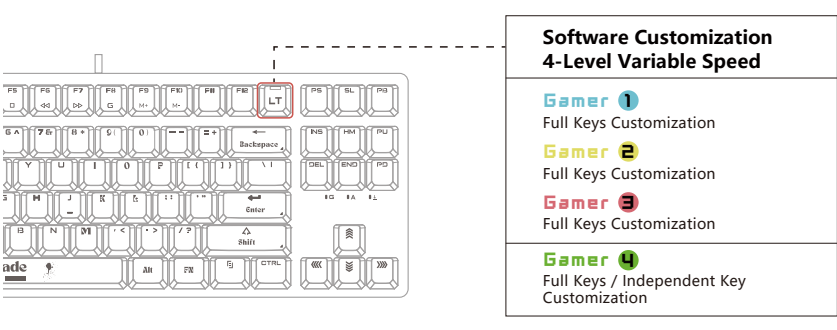
INSTALLATION

Connect the cable Type-C plug to the keyboard and the USB plug to the computer. (Note: Using a USB hub or extension cable to connect is not recommended.)



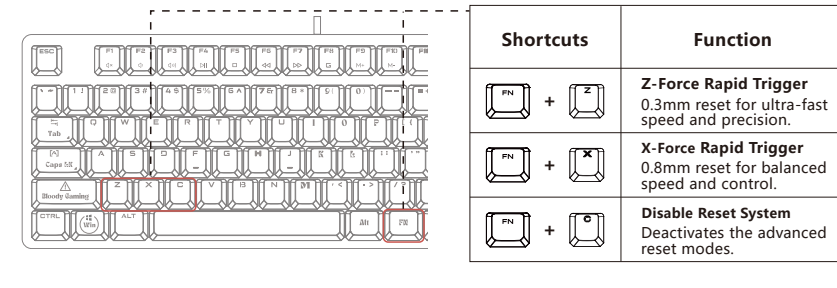
CUSTOMIZABLE LT VARIABLE SPEED PROFILES

Switch between 4 customization actuation levels. With the software, customize up to 23 actuation points (0.8mm to 3.0mm) for all keys or individual keys, creating fully personalized profiles.

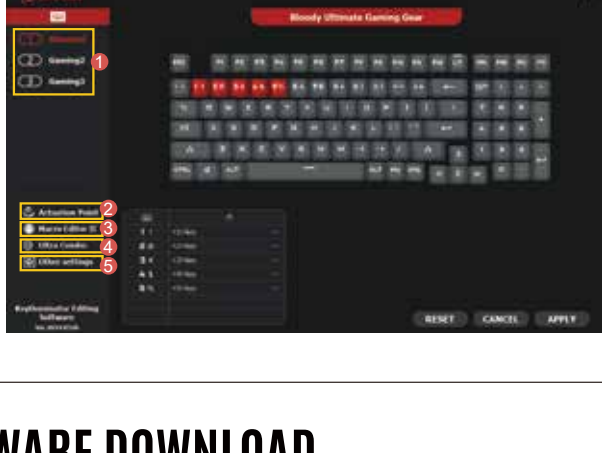


EXACT RESET SYSTEM

When Hyper Z-Force Mode or Extreme X-Force Mode is enabled, the reset occurs at a much shorter distance, allowing for quicker key presses and improving overall responsiveness. This enhances reaction time and performance in various gaming scenarios.



KEYDOMINATOR EDITING SOFTWARE



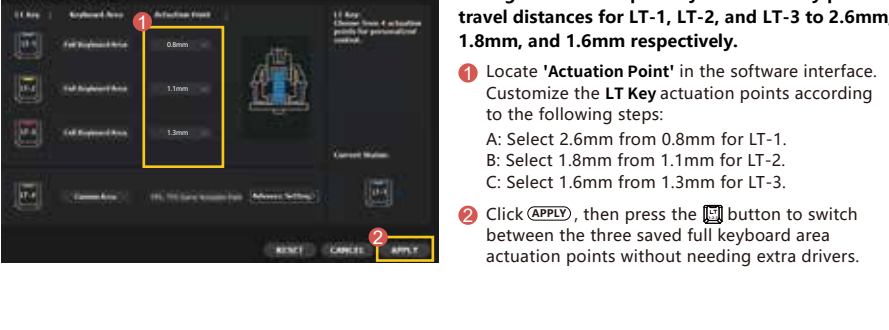
SOFTWARE DOWNLOAD

For optimal product performance and access to advanced customization features, please download and install the software from <http://bloody.com/en/download.php>.

- 1 Keystroke Setting**
Customize keyboard function emulation, programmed keys, shortcut keys, and other settings to suit your preferences.
- 2 Actuation Point**
Fine-tune the travel distance setting of LT optical switches for accurate typing and gaming experiences.
- 3 Macro Editor II**
A player-centric programming platform tailored for users with programming expertise.
- 4 Combination Setting**
A user-friendly player programming platform ideal for players without programming expertise, allowing for the creation of simple programming functions.
- 5 Ultra Combo**
Access settings for advanced software and hardware functions.

FULL KEYBOARD AREA CUSTOMIZATION

Access **LT Optical Travel Configuration** setting by clicking 'Actuation Point' in the software.

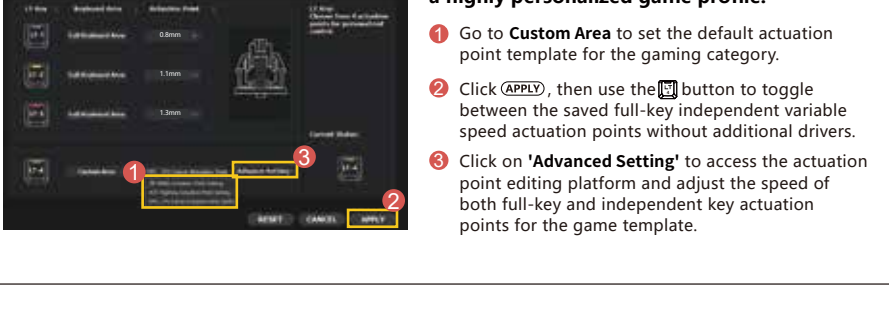


Configuration Example: Adjust the factory preset travel distances for LT-1, LT-2, and LT-3 to 2.6mm, 1.8mm, and 1.6mm respectively.

- Locate 'Actuation Point' in the software interface. Customize the **LT Key** actuation points according to the following steps:
A: Select 2.6mm from 0.8mm for LT-1.
B: Select 1.8mm from 1.1mm for LT-2.
C: Select 1.6mm from 1.3mm for LT-3.
- Click **(APPLY)**, then press the **(FN)** button to switch between the three saved full keyboard area actuation points without needing extra drivers.

FULL-KEY INDEPENDENT CUSTOMIZATION

Access **LT Optical Travel Configuration** setting by clicking 'Actuation Point' in the software.



Configuration Example: Customize the LT-4 default actuation point template to create a highly personalized game profile.

- Go to **Custom Area** to set the default actuation point template for the gaming category.
- Click **(APPLY)**, then use the **(FN)** button to toggle between the saved full-key independent variable speed actuation points without additional drivers.
- Click on **'Advanced Setting'** to access the actuation point editing platform and adjust the speed of both full-key and independent key actuation points for the game template.

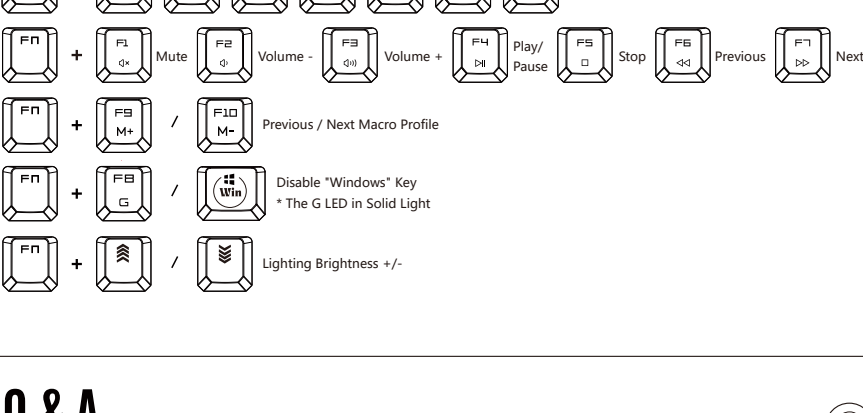
ALPHA PLAYER CUSTOMIZATION

Game Template Configuration Example: Customize the actuation points of the WASD and space keys to 1.4mm while setting other keys to 2.0mm.

- Go to **'Travel Distance'** to name your **Game Actuation Point** template. Once named, a game template will be automatically generated. Then, proceed to adjust the **Full Keyboard Area** setting.
- Set the **Full Keyboard Area** to 2.0mm, then proceed to configure the Single or Multiple Key settings.
- Select **W/S/A/D** and the **<SPACE>** key to designate the actuation point as 1.4mm:
a Red key: Set the independent key actuation point to 1.4mm
b Black key: Set the full key actuation point to 2.0mm
- Save in **File Management**, the current edited game template will be saved.



COMBINATION FN KEYS



Q & A

- Question** Can I switch the actuation points without software?
Answer You may customize and save 4-level actuation points through the software, switch them by driver-free.
- Question** What are the types of the actuation points settings?
Answer With the software, customize the actuation points for all keys or individual keys, creating fully personalized profiles.
- Question** Can I restore the factory default settings for the 4 LT speeds?
Answer Click the [Reset] Button in the software to restore the factory default settings.
- Question** How to adjust the lighting brightness?
Answer Adjust the backlit with 3-level brightness and off by pressing **(FN)** + **(F12)** + **(F13)**.

TECH SPEC

Switch Type	Alpha Optical Variable Speed Switch
Adjustable Actuation Point	23 Options 0.8mm~3.0mm
2-Stage RT Function	RT1: 0.3mm, RT2: 0.8mm
Number of Keys	87 Keys + 1 LT Variable Speed Key
Switch Lifetime	100 Million Keystrokes
Report Rate	1000 Hz
Onboard Memory	4M
RGB Backlit Effect	7 Lighting Effects
100% N-Key Rollover	Yes
Port	USB
Size	36.0 x 13.3 x 4.0 cm
Weight	98.0 g (w/ cable), 91.1g (w/o cable)
System	Windows 7 / 8 / 8.1 / 10 / 11



www.Bloody.com



Scan for E-Manual