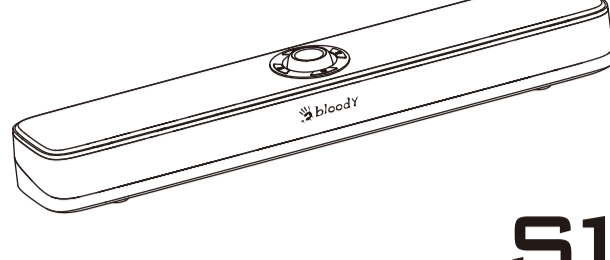


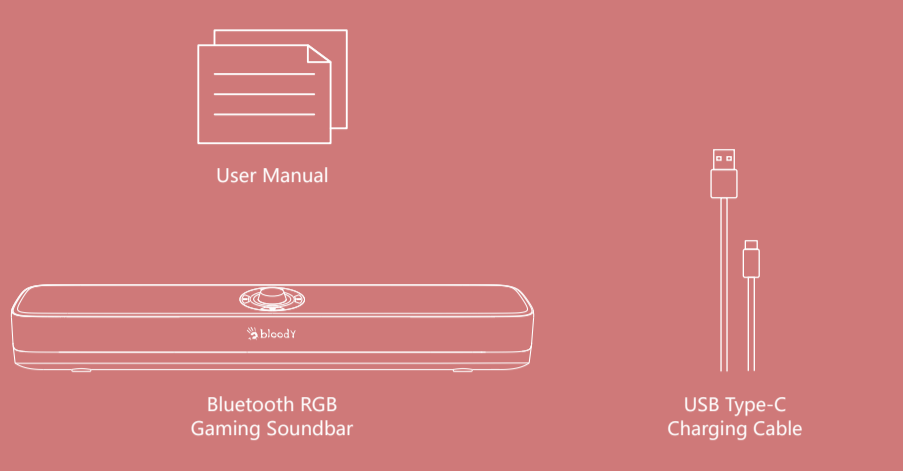
QUICK START GUIDE



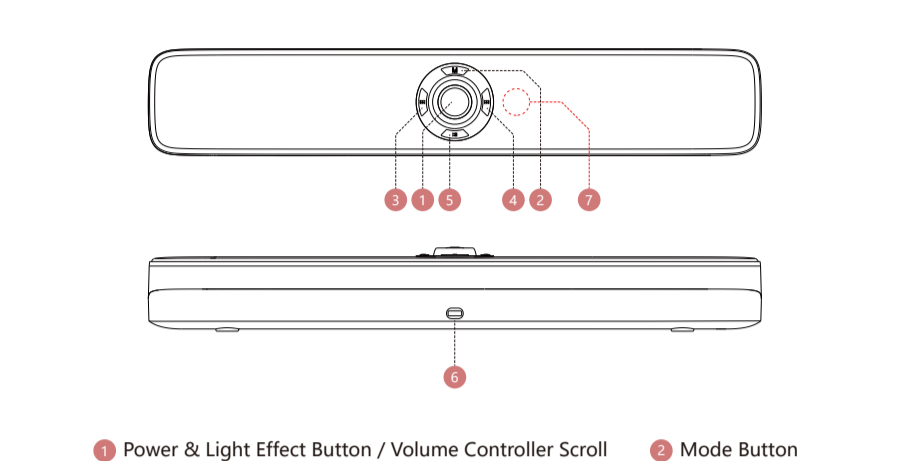
Bluetooth® v5.3

S10 BLUETOOTH RGB GAMING SOUNDBAR

WHAT'S IN THE BOX



KNOW YOUR PRODUCT



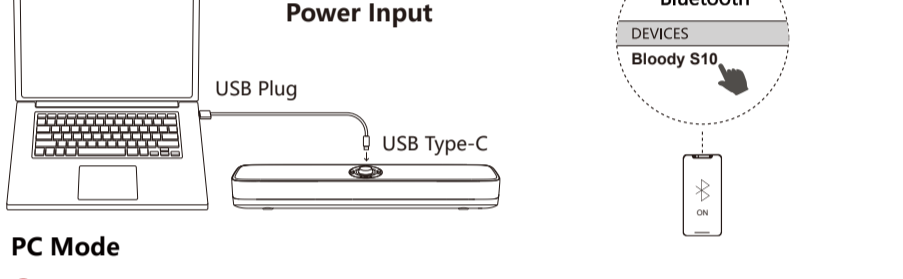
- 1 Power & Light Effect Button / Volume Controller Scroll
- 2 Mode Button
- 3 Previous Track
- 4 Next Track
- 5 Play / Pause
- 6 USB Type-C Port
- 7 Microphone

CONTROL ON YOUR FINGERS



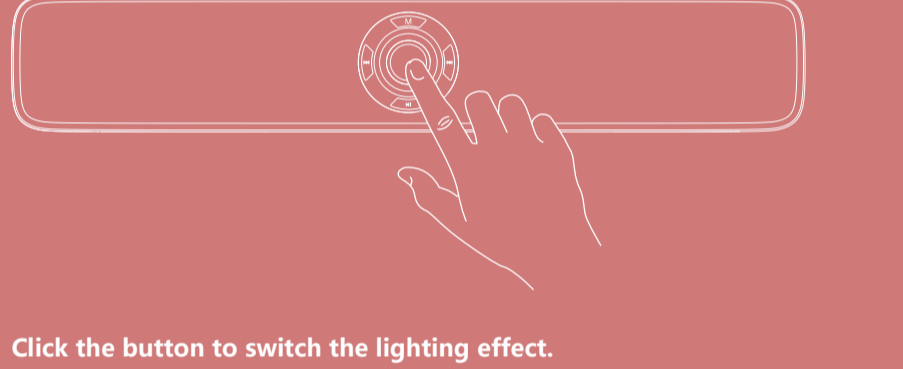
- 1 **Power Button:** Turn On / Off: Long Press for 3S
Volume +: Rotate Right
Volume -: Rotate Left
Light Effect Switch: Short Press
- 2 **Bluetooth / USB Mode Switch:** Short Press
Clear Pairing: Double Clicks
- 3 **Previous Track:** Short Press
- 4 **Next Track:** Short Press
- 5 **Play / Pause:** Short Press

CONNECTING DEVICE



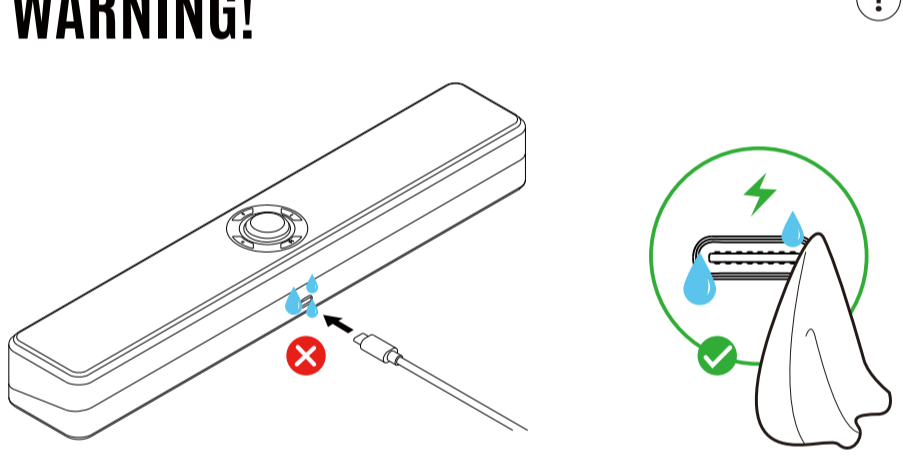
- PC Mode**
- 1 Plug the cable into the speaker and computer.
 - 2 The speaker turns on automatically, and connects to PC mode, with sound "PC Mode".
- Bluetooth Mode**
- 1 Short press the "M" Mode Button to switch modes, with sound "Bluetooth Mode".
 - 2 Choose "Bloody S10" from your Bluetooth device.

RGB LIGHTING EFFECT



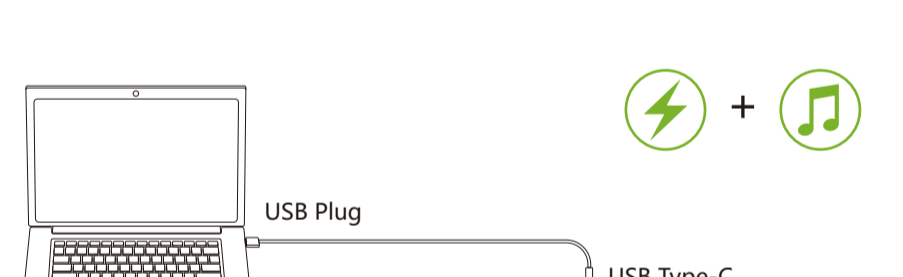
Click the button to switch the lighting effect.
Dynamic Effect → Streaming Effect → Cycle Effect → Red Color → Green Color → Yellow Color → Blue Color → Purple Color → Light Off

WARNING!



If there is water on the Type-C charging port, wipe it dry before use.

TYPE-C DETACHABLE CABLE



USB Type-C cable supports power input and audio delivery through the computer.

SPECIFICATIONS

Connection:	Bluetooth & USB Wired
Bluetooth Version:	v5.3
Operation Range:	Up to 10 M
Voltage / Current:	5V / 1A
Rated Power (RMS):	5W*2 (THD 1%)
Signal to Noise Ratio (SNR):	≥85 dB
Speaker Size:	Φ50 mm with Neodymium Magnet
Speaker Impedance:	4 Ω
Frequency Response:	100 Hz-20 kHz
Sensitivity:	95 dB
Mic. Type:	Omni-Directional Noise Cancelling Mic.
Mic. Size:	Φ6 mm
Mic. Frequency Response:	100 Hz-10 kHz
Mic. Sensitivity:	-30 dB
Cable Length:	150 cm

SAFETY RULES

1. To avoid hearing damage, do not use Speaker at a high volume for a long time.
2. Never disassemble or modify your Speaker for any reason. Otherwise, it may cause the Speaker to malfunction, which is not covered by the warranty.
3. When using an external adapter, the output voltage/current of the external adapter should not exceed 5V/3A.
4. This Speaker is not waterproof. Do not expose this product to drips and spills for extended periods and do not place items containing liquids on the product.
5. Please do not place the product in an environment where the temperature is too low (above 45°C or below -20°C).
6. Do not place your device's light close to your eyes.
7. Not suitable for children under 3 years old.
8. Do not use the device during a thunderstorm.



The Bluetooth word mark and logos are registered trademarks owned by the Bluetooth SIG, Inc. and any use of such marks by Bloody is under license.

Other trademarks and trade names are those of their respective owners.



www.Bloody.com



Scan for E-Manual